

*Port of Savannah*

Bringing **customized, flexible** and **scalable** to your retail fulfillment and distribution needs.

**WHY WDS?**

530,000 SQUARE FEET  
ALL THE POSSIBILITIES

**Capacity & Flexibility**

Meet fluctuating customer demands, distribute your products to major retailers or directly to consumers all through one platform. Our flexible distribution centers were built with you in mind and scale to meet your needs, no matter the season.

**See More With Data**

Our technology gives you real-time visibility into your inventory, orders, and shipments – making your life easier and your business more profitable. Whether you need an email report or a full system integration, we’re on it!

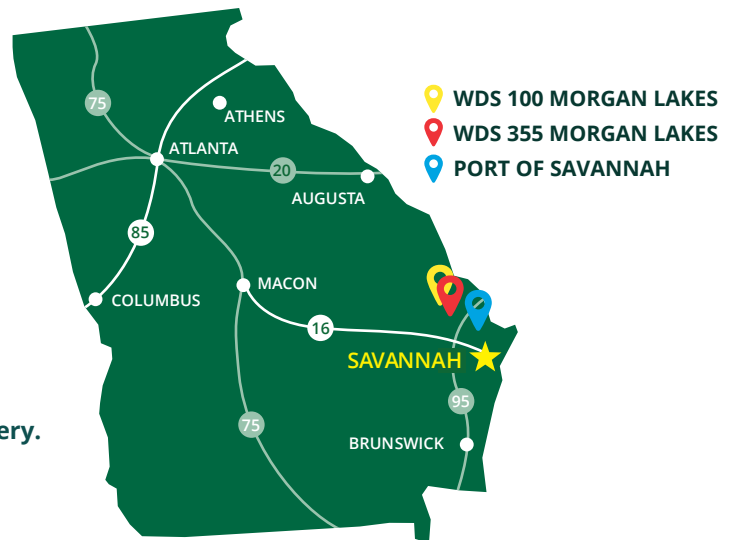
**Partnering for Growth**

Speed up deliveries, cut logistics costs, and guarantee customer satisfaction when you work with our seasoned supply chain experts who help optimize your distribution strategy with solutions to grow your business.



**Access to Suit You**

Our facilities are strategically located just 9 miles from the Port of Savannah’s container terminals and rail yards for reduced port drayage costs and quick transportation across the nation. And if you’re in need of drayage services, we’ve got you covered with our local fleet and nationwide trucking network.  
**We handle same day orders for 1- and 2-day delivery.**



GET IN TOUCH: 757-301-4533 | [sales@worlddds.net](mailto:sales@worlddds.net) | [www.worlddds.net](http://www.worlddds.net)

WDS Savannah: 100 Morgan Lakes Industrial Blvd., Savannah, GA 31322 | 355 Morgan Lakes Industrial Blvd., Savannah, GA 31322



# FACILITY SPECIFICATIONS

WDS SAVANNAH

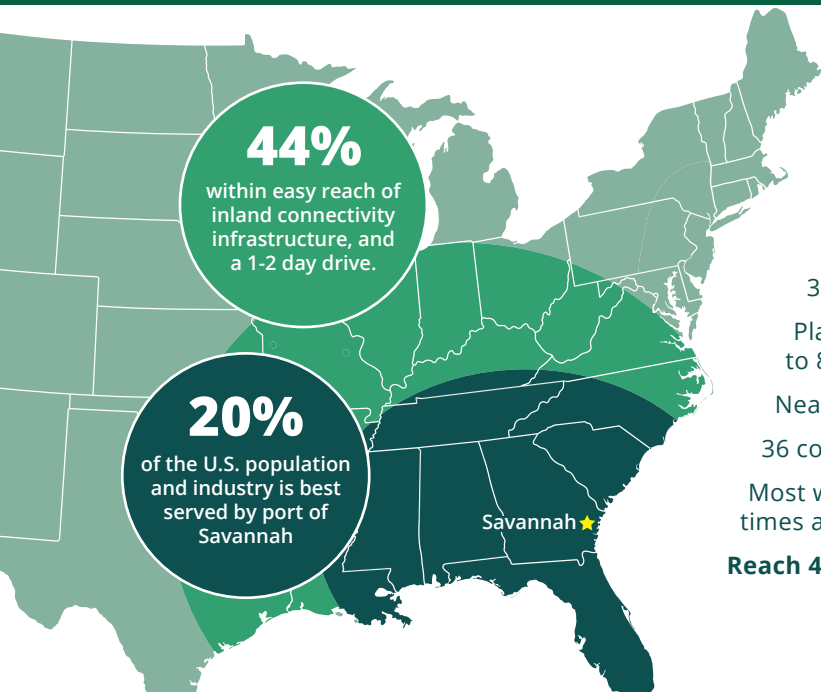
RETAIL IMPORT DECONSOLIDATION  
TRANSLOADING & CROSSDOCKING  
ECOMMERCE DISTRIBUTION  
(B2B, B2C, EDI)  
SEAMLESS TECH INTEGRATION

ORDER FULFILLMENT  
VALUE ADDED SERVICES  
SUPPLY CHAIN SERVICES  
INVENTORY MANAGEMENT

OVERWEIGHT PERMITS  
NATIONWIDE DRY VAN, FLATBED,  
AND INTERMODAL RAIL SERVICES  
LOCAL DRAYAGE FLEET WITH  
OWNED CHASSIS

**WORLD**  
DISTRIBUTION SERVICES

- ✓ Total Warehouse Space: 530,000 sq. ft. (49,239 sq. m.)
- ✓ Fenced & Secured Yard with 24-hour Video Surveillance
- ✓ Near Port Terminals & Major Highways
- ✓ Secured Trailer / Container Parking Spaces
- ✓ 78 Dock Doors, Clear Height: 32 ft. (9.75 m.)
- ✓ USDA / ABC / FDA / Hazmat Certified
- ✓ ESFR Sprinklers



## Port of Savannah Advantages

Spanning 1,345 acres, the Port of Savannah is the largest single-terminal container facility of its kind in North America

36 weekly container ship port calls

Planned 45% annual capacity expansion from 5.5 MTEUs per year to 8 MTEUs per year by 2028

Nearly 2 miles of uninterrupted berthing space

36 container cranes with 8 additional cranes expected by 2028

Most westerly port on the Atlantic seaboard, providing shorter transit times and greater efficiency for cargo destined for major inland markets

**Reach 44% of U.S. consumers & manufacturers within 1-2 day drive**

GET IN TOUCH: 757-301-4533 | [sales@worlddds.net](mailto:sales@worlddds.net) | [www.worlddds.net](http://www.worlddds.net)

WDS Savannah: 100 Morgan Lakes Industrial Blvd., Savannah, GA 31322 | 355 Morgan Lakes Industrial Blvd., Savannah, GA 31322